

FOR IMMEDIATE RELEASE

December 31, 2020

Media Contacts:

Lauren Stephens – (202) 465-6112, lauren.stephens@dc.gov

Mariam Nabizad – (202) 359-2678, mariam.nabizad@dc.gov

**Temporary Lane & Roadway Closures
I-295, Howard Road SE, Suitland Parkway SE,
South Capitol Street SE/SW, and Other Local Roadways & Ramps**

**Daily and Nightly
from January 4 through January 11, 2021**

(Washington, DC) – The District Department of Transportation (DDOT) will temporarily close roadways, lanes, ramps and shoulders on the following corridors to perform construction activities along and near the I-295 / DC 295 corridor. The start of these lane, ramp, and shoulder closures is contingent on suitable weather, field conditions, and/or adjacent construction activities.

SUITLAND PARKWAY & HOWARD ROAD FULL CLOSURES:

Full closures will occur on **Howard Road SE** between the WMATA Parking garage and Firth Sterling Avenue, SE and Suitland Parkway, SE between South Capitol Street, SE/SW and Firth Sterling Avenue, SE nightly between **Monday night, January 4** and **Friday morning, January 8, 2021.**

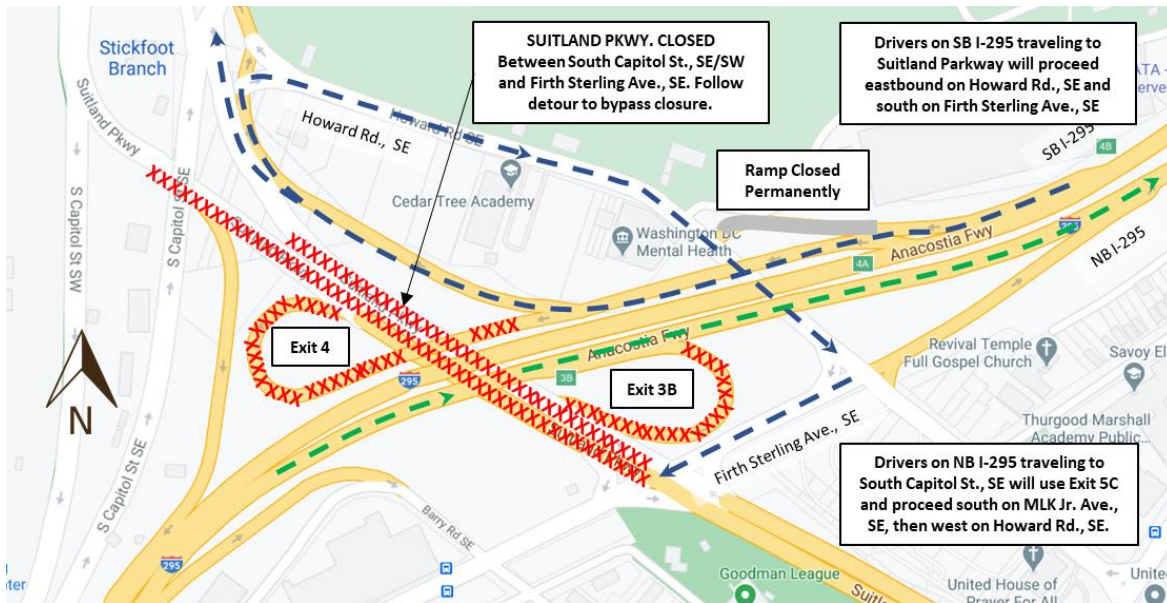
These weeknight full closures with detours will start at **8:00 p.m.** and end by **6:00 a.m.** These full closures will not occur on the same nights, only one roadway will be closed at a time; weather permitting.

Only the full closure of **Suitland Parkway, SE** will continue during the weekend from **8:00 p.m., Friday night, January 8** to **5:00 a.m., Monday morning, January 11, 2021.**

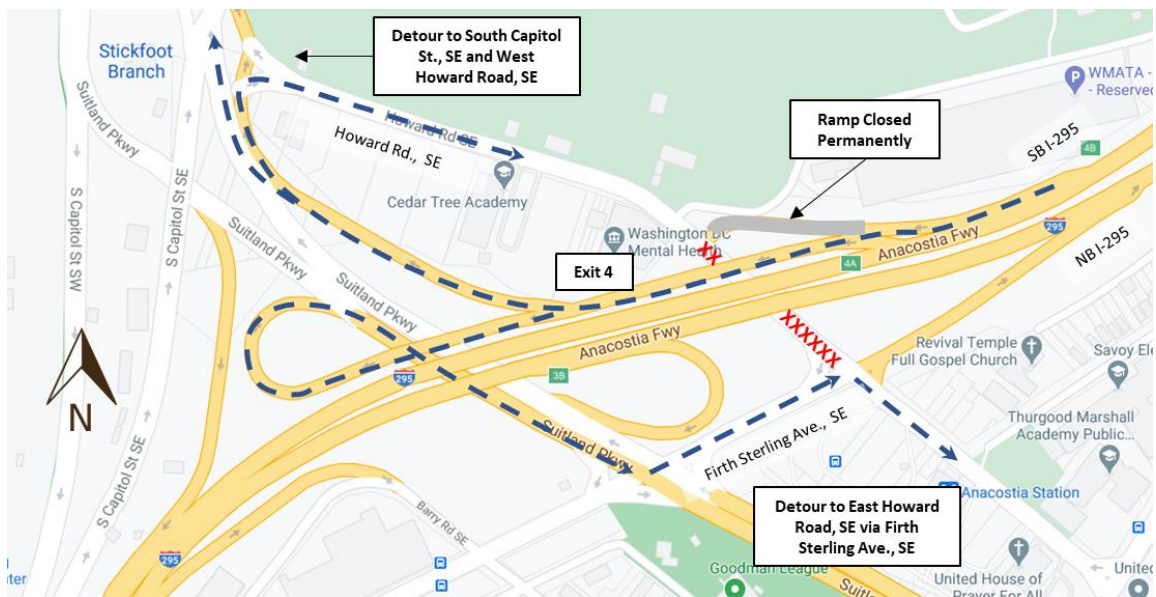
The closure of **Suitland Parkway** will include the closure of access from northbound I-295 (Exit 3B) and southbound I-295 (Exit 4 to Suitland Parkway). Signed detours will be in place during these closures as shown by the detour maps below:

- **When Exit 3B (from I-295 NB) is closed**, traffic on northbound I-295 can access South Capitol Street, SE by continuing north to exit at Exit 5C to Martin Luther King Jr. Avenue, SE and following detour signs to Howard Road, SE and back to Suitland Parkway, SE.
- **When Exit 4 to Suitland Parkway (from I-295 SB) is closed**, traffic on southbound I-295 can access Suitland Parkway by continuing via Exit 4 to Howard Road, SE and follow detour signs to return to Suitland Parkway, SE.

Overnight Suitland Parkway, SE Closure & Detour



Overnight Howard Road, SE Closure & Detour



I-295 NORTHBOUND & SOUTHBOUND CLOSURES:

Single left or right lane closures will also occur on **I-295 Northbound (Anytime)** and **I-295 Southbound (6:00 a.m. to 3:30 p.m.)** between Exit 1 (Laboratory Road / US Naval Research Lab) and I-695 **daily**, between **Monday, 1/4** and **Monday, 1/11/21**.

Double left or right lane closures will also occur on **I-295 Northbound (8:00 p.m. to 5:30 a.m.)** and **I-295 Southbound (9:00 p.m. to 6:00 a.m.)** between Exit 1 (Laboratory Road / US Naval Research Lab) and I-695, **nightly**, between **Monday, 1/4** and **Monday, 1/11/21**.

SOUTH CAPITOL STREET, SE/SW, SUITLAND PARKWAY, SE, & OTHER LOCAL ROADWAY CLOSURES:

Single left or right lane closures will occur on **Inbound (NB) South Capitol Street, SE/SW** from Firth Sterling Avenue, SE and N Street, SE and/or **Inbound (WB) Suitland Parkway, SE** between the Martin Luther King, Jr. Avenue, SE overpass and South Capitol Street, SE **daily (9:30 a.m. to 6:00 a.m. [next morning])** between **Monday, 1/4** and **Monday, 1/11/21**.

Single left or right lane closures will occur on **Outbound (SB) South Capitol Street, SE/SW** from Firth Sterling Avenue, SE and N Street, SE and/or **Outbound (EB) Suitland Parkway, SE** between the Martin Luther King, Jr. Avenue, SE overpass and South Capitol Street, SE **daily (9:30 a.m. to 4:00 p.m.)** and **nightly (6:30 p.m. to 6:00 a.m.)** between **Monday, 1/4** and **Monday, 1/11/21**.

Double left or right lane closures will also occur on **Inbound & Outbound (NB/SB) South Capitol Street, SE/SW** between Firth Sterling Avenue, SE and N Street, SE and/or **Inbound & Outbound (WB/EB) Suitland Parkway, SE** between the Martin Luther King, Jr. Avenue, SE overpass and South Capitol Street, SE **nightly (8:00 p.m. to 5:00 a.m.)** between **Monday, 1/4** and **Monday, 1/11/21**.

Single lane closures will occur anytime along Firth Sterling Avenue, SE, Potomac Avenue, SE/SW, Half Street, SW, Howard Road, SE, Barry Road, SE, St. Elizabeths Avenue, SE, and South Capitol Street, SE/SW. Please expect delays when traveling these corridors.

RAMP CLOSURES:

Full closures will also occur for the following ramps between **Monday, 1/4** and **Monday, 1/11/21**. These closures will occur daily between **9:30 a.m. and 4:00 p.m.** and nightly between **8:00 p.m. and 5:30 a.m.**, unless otherwise noted.

- Exit 3B from I-295 Northbound (South Capitol Street / Nationals Park / Downtown)
- Exit 4 from I-295 Southbound (South Capitol Street / Suitland Parkway)
- I-295 Northbound On-ramp from northbound Firth Sterling Avenue, SE

These closures are required for construction activities associated with the following DDOT projects:

South Capitol Street Corridor Project - Frederick Douglass Memorial Bridge

The South Capitol Street Corridor Project calls for replacing the Frederick Douglass Memorial Bridge and transforming related sections of the urban freeway into a beautiful scenic boulevard that increases pedestrian and vehicular safety, improves multimodal transportation options, increases community accessibility and supports economic development on both sides of the Anacostia River.

For more information about DDOT's ongoing efforts to improve the 295 corridors, visit www.improving295dc.com.

###

For more information about DDOT's ongoing efforts to improve the 295 corridor, visit www.improving295dc.com.

The mission of the District Department of Transportation (DDOT) is to enhance the quality of life for District residents and visitors by ensuring that people, goods, and information move efficiently and safely with minimal adverse impact on residents and the environment.

Follow us on [Twitter](#) for transportation-related updates and more; like us on [Facebook](#) and visit the website at www.ddot.dc.gov. Visit goDCgo.com for more information on transportation options in the District.